

3+/- ac. Commercial Property Lanier Rd. Madison, Alabama



- **Ideal uses:**
 - Assisted Living
 - Micro Breweries
 - Indoor Recreation
 - Utility Services
 - Government Services
 - Health Club
 - Hotel
 - Medical Clinic
 - Office
 - Nursing Home
 - Research Facility
 - Worship Center

Property Brief

Location: Hughes Rd. Commercial Park,
Lanier Road.

Size: 3.02+/- ac.
360+/- ft. X 364+/-ft.

Topo: Level and cleared

Zoning: City of Madison B3

Price: \$460,000.00

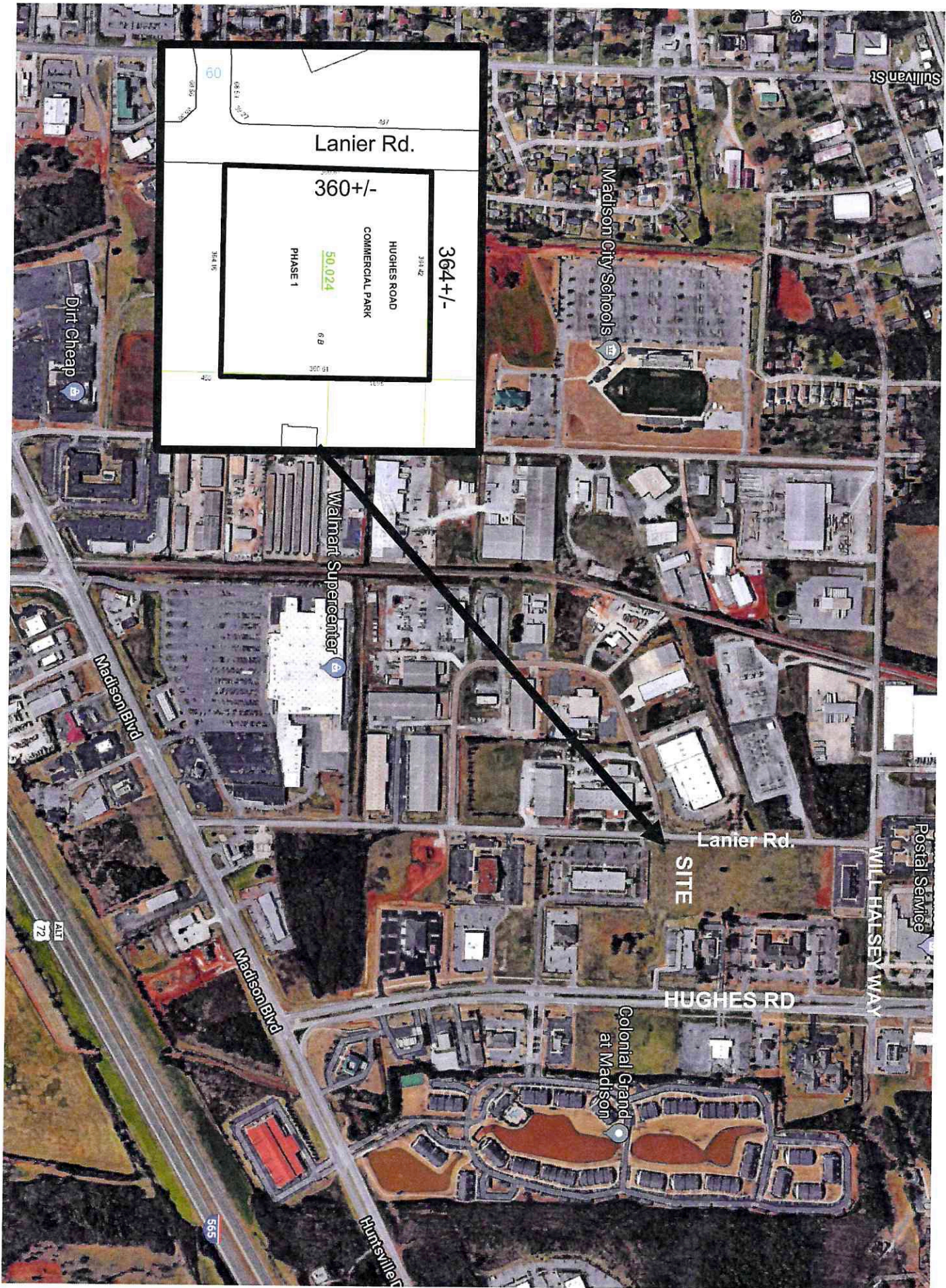
*This commercial lot is located on
Lanier Road in Madison, Alabama
near I-565, and Madison Blvd..*



BILL POOLE REALTY
*Huntsville's Oldest Commercial
Brokerage*

100 Church Street
Suite 525
Huntsville, AL 35801
(p) 256-533-0990
(f) 256-534-1234

This property is subject to prior sale or removal from the market without notice. All information shown in this package, while based upon information supplied by the owner and from other sources deemed reliable, is not, in any way warranted by BILL POOLE REALTY.



60

Lanier Rd.

360+/-

HUGHES ROAD
COMMERCIAL PARK
PHASE 1

50,024

304+/-

304+/-

Walmart Supercenter

Madison City Schools

Madison Blvd

Lanier Rd.

SITE

HUGHES RD

Colonial Grand
at Madison

WILL HALSEY WAY

Postal Service

Dirt Cheap

72

Madison Blvd

Huntsville

565

Sullivan St