

# FOR SALE

## Gas Station/Convenience Store

Pop's Travel Center - 6669 Highway 31 South,  
Morgan County, AL

- Intersection of I-65 and US Hwy 31
- Previously Stuckey's & Dairy Queen
- 4 Acres +/- (174,240 SF)
- 4428+/- SF Gross Building Space
- Fuel canopy over four (4), 3-Product, 2-Hose M.P.D.s, resulting in eight fueling stations
- Renovated in 2012 per the owner, with new HVAC's, lighting, restroom fixtures, paint, new ceiling, and display coolers (7 doors)



*Huntsville's Oldest Commercial Brokerage*

100 Church Street  
Huntsville, AL 35801  
256-533-0990

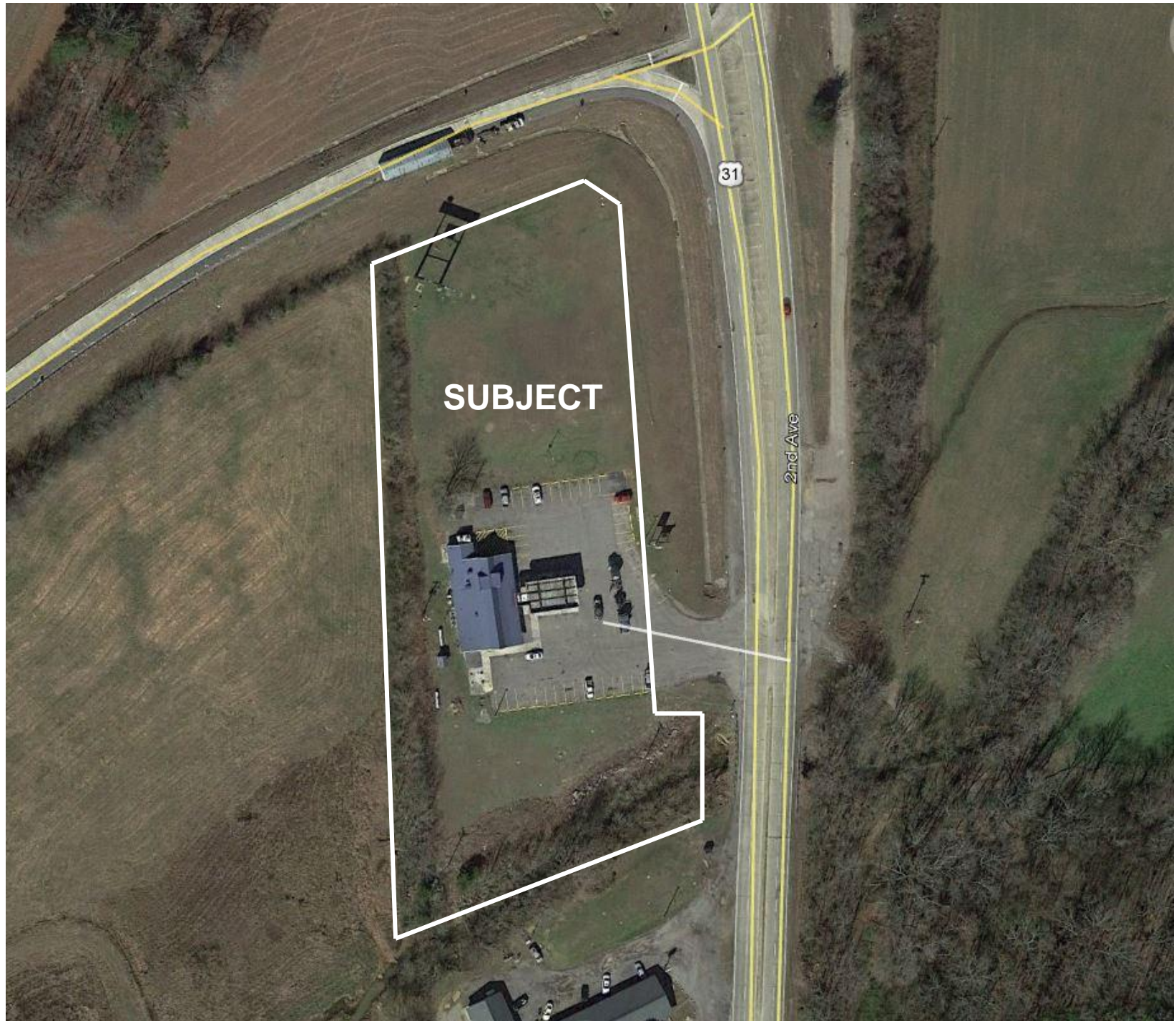
Listing Price

~~\$425,000~~ Reduced

**\$299,000**



All information shown, while based upon information supplied by the owners and from other sources deemed reliable, is not, in any way warranted by BILL POOLE REALTY



**SUBJECT**



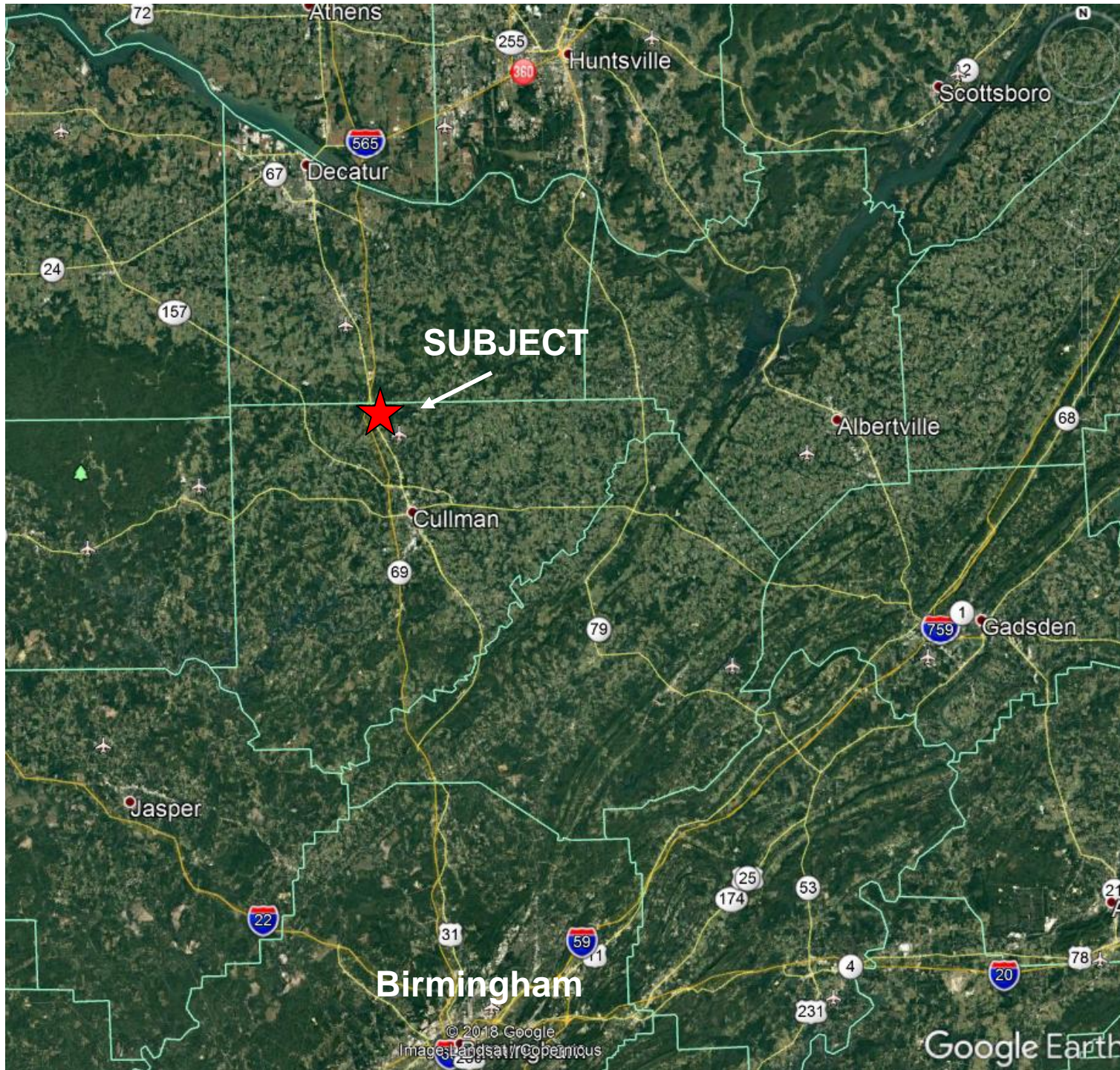
65

31

2nd Ave

SUBJECT

N



**SUBJECT**

**Birmingham**

© 2018 Google  
Images Landsat/Copernicus

Google Earth

